

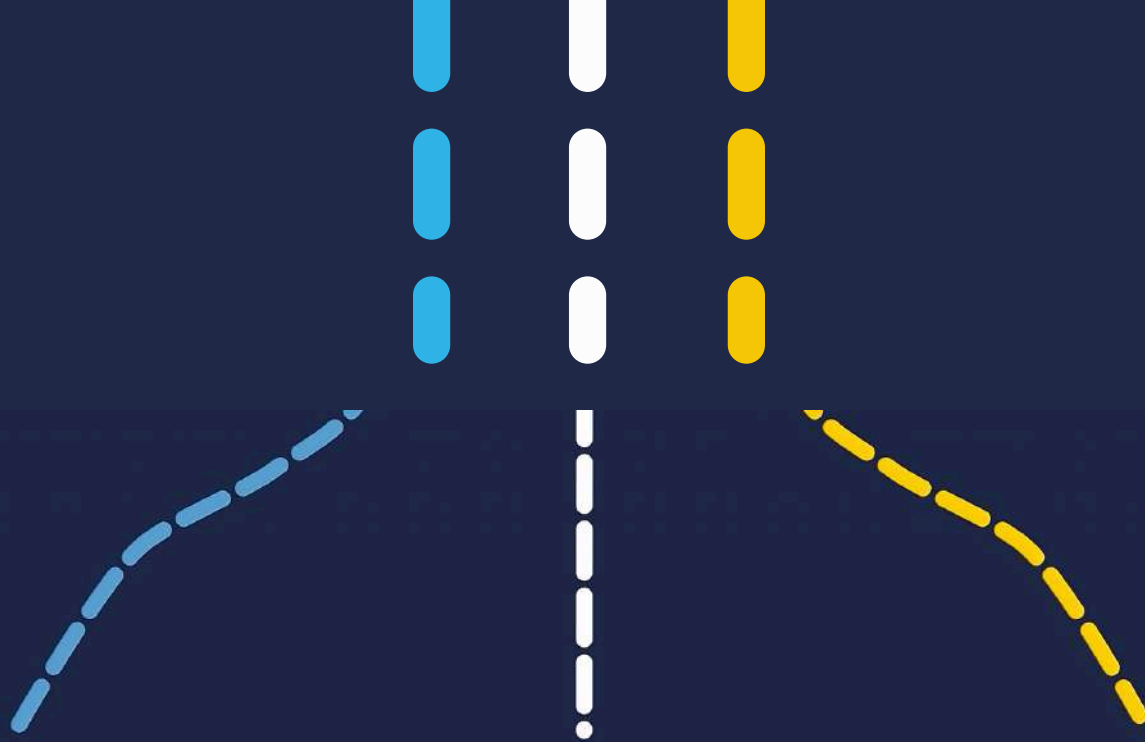
YOUR SIXTH FORM



WARMINSTERSCHOOL.ORG.UK



1707



**International
Baccalaureate**

OCR

Oxford Cambridge and RSA

Cambridge Technicals



1707

A Levels

Choose a pathway that **fits you best**



Or **combine pathways to suit you**



WELCOME TO WARMINSTER SIXTH FORM



Warminster School has a vibrant and diverse Sixth Form community with a number of academic pathway options.

Boarding pupils live in Stratton House, and an increasing number of day pupils choose to become boarders for Sixth Form in preparation for university life. The Sixth Form at Warminster School is seen by many parents as the ideal place for their son or daughter to spend the transition years between the very structured GCSE courses and the freedom of university life. Studying towards an International Baccalaureate Diploma or a demanding A Level programme is very different from GCSEs. Through the house and tutorial system, staff help to ensure that all our pupils are guided in making that transition effectively. Pupils are encouraged to embrace all that the Sixth Form has to offer, both inside and outside the classroom. All pupils are allocated a personal Tutor, who is responsible for their academic and social well-being during the whole of their Sixth Form career. Tutors have regular meetings with their tutees, and work closely with the Director of Sixth Form and their respective Head of House to ensure that all Sixth Form pupils are appropriately supported during their time here.

Townroe Lodge is home to our Sixth Form community. With extensive communal and study areas, all overseen by Director of Sixth Form, Gill Walmsley. Townroe provides a fantastic space for our Sixth Formers. It has the advantage of being a fully contained home and garden, and is situated in the heart of the School campus. Pupils have helped personalise and make this space their own. By working collaboratively with our pupils, we have ensured our Sixth Form space is a direct reflection of their expectations, providing them with an inspirational environment for their Sixth Form adventure with us. Townroe is perfect for studying, relaxing and the hosting of popular social events organised by the Sixth Form Committee.



ETHOS



In order to support the School's aims, we provide a curriculum that builds on GCSEs and provides the springboard for further study at university, as well as offering opportunities for the development of the transferable skills needed in the workplace. Higher Education and Careers advice are a major priority, but so too are the transferable skills which all pupils will need to succeed, not just at university but in the competitive world beyond. Many departments at Warminster arrange trips to lectures, plays, films or exhibitions and galleries. We believe that these visits provide extra stimulation and experience for all the pupils and we encourage as many pupils to go on them as possible. At Warminster School we are keen to ensure that the narrow specialisation of some courses is counter-balanced by a broader general education programme. This provides our pupils with the opportunity to develop their talents further, and broaden their perspective of life beyond school.

SPORT

The importance of personal fitness and health is recognised by all. We provide the opportunity for pupils to experience new sporting activities, alongside the more traditional sports. Sixth Formers obviously make an important contribution to school teams in all the major sports. They have the chance to develop their leadership potential, and their ability to work as part of a team by taking part in competitive sport. Many of our pupils play representative sport for Wiltshire.



YOUR SIXTH FORM

#COMMUNITYOFOPPORTUNITY



CO-CURRICULAR



An extensive co-curricular programme exists for our Sixth Formers. Universities and employers look favourably upon candidates who have experienced a variety of activities outside the classroom. We encourage many of our Sixth Formers to take part in public speaking and debating competitions, both in school, the local community and nationally. We also participate annually in the Model United Nations Conference in Bath. The thriving CCF and the Duke of Edinburgh Award Scheme both rely heavily on the input of our Sixth Form. Every Wednesday afternoon also sees all Sixth Form pupils giving something back to the community through our EDGE programme with sessions including working with elderly members of the community through to our own nursery group. Many outdoor and adventure training activities have taken place in recent years including adventure trips to Morocco and Tanzania.



ENRICHMENT - GREEN ZONE AND EDGE

All Sixth Form pupils participate in a dedicated Enrichment Programme - Green Zone and EDGE. We firmly believe this helps pupils make the transition from relative dependence to increasing independence, to take greater responsibility for their own academic and personal progress, and to be proactive in seeking out the right opportunities in the world of higher education and the world of work. We want our pupils to be equipped to not just cope with, but also thrive in, these challenging worlds. Pupils choose from a wide selection of Green Zone and EDGE activities, developing independence, character, emotional intelligence, self-awareness and personal values, helping them to embrace challenges and to push themselves to realise their full potential. Alongside Green Zone and EDGE, a dedicated Sixth Form Lecture Programme, Careers and Higher Education talks, invited guest speakers discussing issues ranging from adventure and exploration to environmental and political issues, as well as community engagement and volunteering activities. Pupils can apply to be mentors. Peer mentors work with younger pupils to support and share experiences. Peer Mentors are fully trained to coach and mentor and also have to complete safeguarding training too. Green Zone and EDGE activities teaches pupils essential skills such as teamwork, how to study effectively, how to present and how to communicate, as well as how to self-manage. The intention is that our pupils learn to display self-confidence and self-reliance, and are equipped with expert, up-to-date knowledge about how to cope with life after Warminster School.





LEADERSHIP OPPORTUNITIES

We strongly encourage all pupils to take on a position of responsibility at some stage of their Sixth Form career. There is a team of School Prefects, led by the Heads of School who assist the Headmaster and Deputy Head in the day to day running of the School. Each boarding and day House has its own Prefects. Both groups are heavily involved in House activities and the development of community spirit. Sixth Formers conduct parent tours and assist with other activities. Being on the Social Committee is also an opportunity to take responsibility to assist the Head of Sixth Form in organising social events including dinners, dances and concerts. Many Sixth Formers hold senior ranks in the Combined Cadet Force (CCF) and embark on the Duke of Edinburgh Gold Award.



Independent Study

Study skills are very important, and need to be developed in the Lower Sixth from the very start. Supervised private study enables pupils to make the transition from the largely teacher directed work at GCSE, to the more self-reliant approach needed in the Sixth Form. Goal setting and personal development planning (PDP) guided by the personal tutor allow pupils to take a balanced and objective view of their academic and personal progress.



SIXTH FORM ENTRY REQUIREMENTS

Whilst we consider each pupil individually prior to them embarking on their Sixth Form journey, the general entry requirements for Warminster Sixth Form is a minimum of five passes at grade 5 or above at GCSE and a minimum grade 6 in the subject(s) they wish to study, grade 7 in Maths and the Sciences. When designing your study programme you should select subjects which complement each other well. You should also be aware of the particular qualifications or combinations of subjects that may be required for particular university degree courses. This prospectus contains descriptions of all the subjects available at Warminster School written by the relevant Heads of Department. The aim of these is to give you some idea of what it is like to follow those subjects and if it might interest and stimulate you. In nearly every subject the approach in the Sixth Form is very different from what you have been used to at GCSE and in many cases the content is markedly different as well. You should nevertheless use your knowledge of the corresponding GCSE course to help you make up your mind. You should also talk to the Head of Sixth Form, your Tutor, your subject teachers and possibly fellow pupils who are already in the Sixth Form before coming to any final decision.



GCSE RESITS

Any pupil who has not gained a pass at grade 4 or above in English Language or Mathematics is expected to re-sit these subjects in the Sixth Form. Targeted lessons are provided to help pupils to prepare for these examinations.

HIGHER EDUCATION



In recent years, nearly all of our Upper Sixth pupils have moved into Higher Education on leaving Warminster School, with 96% of recent leavers gaining a place at their first choice university. The Sixth Form team offers excellent support to our pupils, whether they intend to go on to Higher Education or wish to start a career immediately upon leaving school. Presentations on University and other Higher Education programmes are offered to pupils and parents during the Summer Term of the Lower Sixth. At the end of the Lower Sixth planning for University application is helped through a series of one-to-one interviews with the Director of Sixth Form and Deputy Head of Sixth Form. Pupils have unlimited access to the well-stocked Careers area, which has good computer facilities providing a number of interactive Careers and Higher Education Course databases. There are also dedicated programmes available to those applying for Oxbridge, Medical and Veterinary courses.



INTERNATIONAL BACCALAUREATE

IBDP & IBCP



The IB is highly regarded by universities and employers across the globe. Universities are now actively seeking IB graduates as they are better prepared for university study and adjust better to university life, while employers are recognising IB students as having the necessary skill set and character traits to grow and develop in a healthy and happy way. Pupils often choose closely related A Level subjects – Maths, Further Maths and Physics is a common combination, for example. But out in the real world even the professional mathematicians will need some knowledge of other areas of life so as to put their studies in context.



IB Mission statement: The IB aims to develop inquiring, knowledgeable and caring young people who help to create a better and more peaceful world through intercultural understanding and respect. IB students across 168 countries are encouraged to become active, compassionate and lifelong learners who understand that other people, with their differences, can also be right.

The International Baccalaureate is a world-leading not-for-profit foundation set up in Geneva in 1968 that offers a sequence of 4 educational programmes from the ages of 3 to 19 with the goal of creating a better world through education. The IB fosters critical thinking, creativity, communication, social, self-management and research skills, while developing character traits of international-mindedness, curiosity, compassion, open-mindedness, reflection, risk-taking, integrity and a balance of the intellectual, physical and emotional aspects of one's life.

INTERNATIONAL BACCALAUREATE



The International Baccalaureate Diploma Programme allows pupils to maintain a breadth to their curriculum studies. This breadth firstly matches the multi-disciplinary world we now live in and offers better creativity and skill in solving real-world problems including the environment, development, conflict resolution, rights, cooperation, and governance at local, national and international levels. Maintaining breadth is also useful for those who are undecided about their career path and want to keep options open.

IB diploma pupils select one subject from each of the following groups:

- Studies in language and literature
- Language acquisition
- Individuals and societies
- Mathematics
- Sciences
- Arts, OR a 2nd subject from groups 1 to 5



Three subjects are studied at Higher Level and three at Standard Level.

Summary

Three subjects taken at Higher Level
Three subjects taken at Standard Level
Seven points are available for each subject
CAS, TOK and EE components (*max of 3 points awarded in total*)
Total of 45 points available
UCAS points equivalent to 4.75 A levels

Warminster offers not just the Diploma Programme within the IB, but also the Career-Related Programme (IBCP).

For some pupils the more practical side of this qualification is a game-changer. With an IBCP qualification a young person can go out confidently into the workplace or indeed into university courses if they wish.

INTERNATIONAL BACCALAUREATE



IB Diploma Programme

All subjects are studied throughout the course and are examined in the final term. In most subjects there are also coursework tasks ranging from oral exams to project work. The three additional Core subjects (TOK, EE, CAS) are essential to the Diploma and contribute significantly to the respect which the qualification is afforded.

The Extended Essay (EE)

Pupils are given the opportunity to practise skills required at university by completing a piece of independent research on a subject of their choice. The review of their research is summarised in a document of 4,000 words, presented in the style of an academic dissertation.

Pupils are allocated a personal supervisor who advises them on how to conduct their research and produce their Essay. The Essay is started in the Spring Term of the Lower Sixth and is finished in the Winter Term of the Upper Sixth.

Theory of Knowledge (TOK)

Pupils follow a course of critical thinking which encourages questions about the origins and the basis of knowledge, challenges passive acceptance of facts and promotes active participation and develops lateral thinking and an appreciation of cultural diversity. The course is designed to assist the development and understanding of each subject discipline. The course is assessed by one essay of 1600 words and a theory of knowledge exhibition.

Creativity, Activity, Service (CAS)

The three strands of CAS, which are often interwoven with particular activities, are characterised as follows:

- Creativity – arts, and other experiences that involve creative thinking.
- Activity – physical exertion contributing to a healthy lifestyle, complementing academic work elsewhere in the DP.
- Service – an unpaid and voluntary exchange that has a learning benefit for the pupil. The rights, dignity and autonomy of all those involved are respected.

INTERNATIONAL BACCALAUREATE



To demonstrate these concepts, pupils are required to undertake a CAS project. The project challenges pupils to:

- show initiative
- demonstrate perseverance
- develop skills such as collaboration, problem solving and decision making.

Diploma qualification criteria

To obtain the IB Diploma, pupils must fulfil the course requirements, which include gaining a minimum of 24 points and complete the Core Subject requirements. Pupils are guided through these requirements as the course progresses.



A LEVELS & CAMBRIDGE TECHNICAL DIPLOMA

A LEVELS

A Levels are no longer examined in two distinct halves but in one final assessment at the end of two years. The AS qualification still remains for some subjects but is not regarded as equivalent to half an A Level. There is no external assessment for most A Level pupils in the Lower Sixth: all assessment takes place at the end of the Upper Sixth. Exams also include more extended writing and more maths in subjects other than Maths itself.

A Levels are academically demanding this needs to be considered when deciding how many subjects to study in the Lower Sixth. Every pupil will have a consultation with senior staff to ensure that they select a suitable programme of study.



The subjects we are offer at A Level are:

- Art
- Biology
- Chemistry
- Computer Science
- DT: Product Design
- Drama & Theatre Studies
- English Literature
- French
- Further Mathematics
- Geography
- History
- Mathematics
- Music Technology
- Music
- Photography
- Physics
- Politics
- Psychology
- Religious Studies
- Spanish

Our recommendation is that most pupils select THREE subjects to study in the Lower Sixth, plus an EPQ. We are happy for pupils to select four subjects, but only following a conversation with a senior member of staff. Pupils are encouraged to add breadth by completing an EPQ in the Lower Sixth alongside their A Level studies.

Cambridge Technicals on offer:

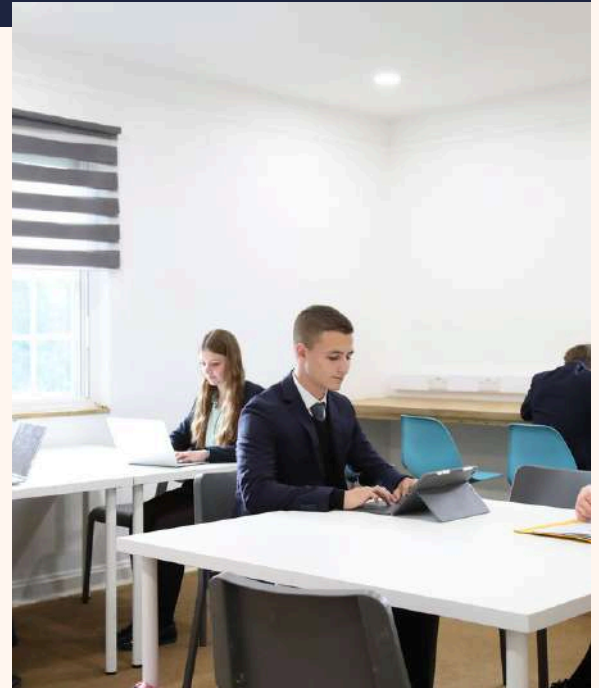
- Business (single and double)
- Sport (single and double)
- IT & App Development
- Engineering

BLENDING PROGRAMMES



We also offer vocational courses following the OCR Cambridge Technical Diploma courses which can be taken as part of a blended programme with A Levels or through the IB Career Related Programme (IBCP):

- Business
- Engineering
- Information Technology
- Sport & Physical Activity



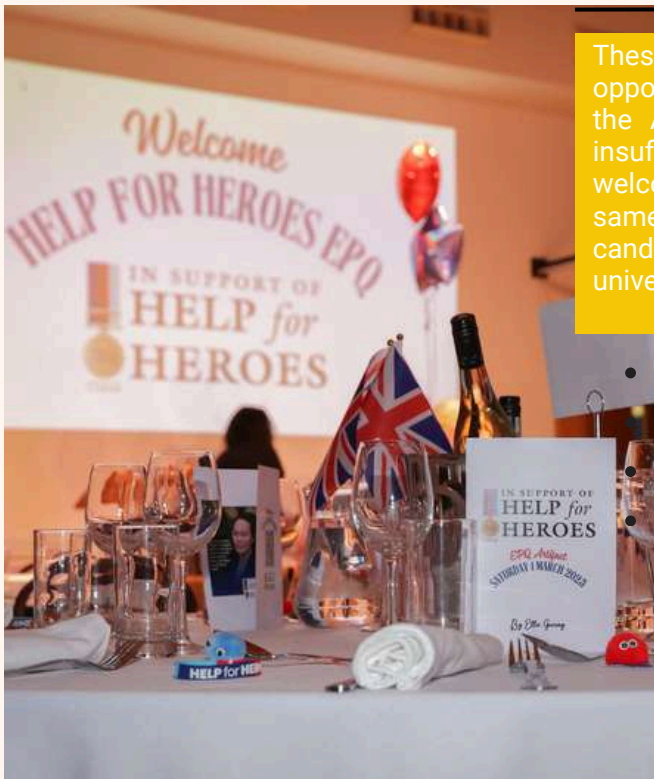
Some subjects require no previous study at GCSE, more details on this can be found on the specific subject pages. It may also be possible, in exceptional cases, to take certain subjects without a GCSE in that subject. Anyone interested in studying A Level Music Technology should be a practical musician of at least Grade 5 standard. Further details about this A Level are available from the Music Department.



In addition, provision may be made for the study of other languages, at extra charge. The general consensus is that pupils should have gained a grade 5/6 or above in a subject at GCSE in order to begin an A Level course in that subject. For Mathematics and the Science subjects our recommendation is that pupils have gained a grade 7 or above in order to access the course. We try very hard to offer every subject combination desired by pupils, but cannot make any guarantees due to timetabling constraints.

EXTENDED PROJECT QUALIFICATION

Since September 2008, exam boards in England have offered additions to their Sixth Form qualifications. An important aspect of this is the Extended Project Qualification (EPQ). The EPQ is a compulsory part of the UK Diplomas but is also a qualification in its own right. The EPQ is a substantial piece of individual work which can be in the form of a dissertation, extensive investigation, artefact or performance. It allows pupils to increase their depth of learning in an area of the curriculum of their choice and above all stresses the importance of skills such as independent research, reflective learning, critical thinking and planning and organisation.



These skills are highly valued by universities and the EPQ is an opportunity to address some of the perceived weaknesses of the A Level system, namely too much spoon-feeding and insufficient study in depth. It has therefore been warmly welcomed by higher education institutions and carries the same weighting as an AS level. Importantly, it adds to the candidates' UCAS tariff points and improve their access to universities.



Some universities make lower offers to candidates with an EPQ. We consider the EPQ qualification a positive and are confident that the project helps give our Sixth Form pupils an advantage when it comes to demonstrating a variety of valuable skills, to universities, and subsequently to employers.



What will
your next
step be?





ART

WHAT DO I NEED TO KNOW OR BE ABLE TO DO BEFORE TAKING THIS COURSE?

- The best foundation for success in A Level Art is a good grade at GCSE.
- An aptitude for the subject - if you are creative or good at drawing you should have the basic skills to succeed.
- A level Art is not an easy option and you should be prepared to work hard at developing your abilities.
- You should have an understanding of the basic elements of art - colour, tone, form etc, and also some understanding of the place art, craft and design hold in the world - its history and its purpose.
- Above all you should have an understanding of art and the determination to develop that interest.

DO I NEED A GCSE IN THIS SUBJECT?

Desirable

MINIMUM GCSE GRADE SHOULD I AIM FOR TO STUDY THIS SUBJECT?

6

DO I NEED ADDITIONAL GCSES AT A CERTAIN GRADE TO ACCESS?

No

What will I learn?

- You will learn how to develop ideas through sustained and focused investigations informed by contextual and other sources, demonstrating analytical and critical understanding.
- How to explore and select appropriate resources, media, materials, techniques and processes, reviewing and refining ideas as work develops.
- How to record ideas, observations and insights relevant to intentions, reflecting critically on work and progress.
- Present a personal and meaningful response that realises intentions and, where appropriate, makes connections between visual and other elements.

What kind of pupil is this course suitable for?

- Pupils who wish to undertake further studies in art, craft and design, usually at Art College or in Further Education.
- Pupils who are looking to take up careers for which an art background is relevant. These might include advertising, publishing, architecture, museums, theatre or art gallery work. Pupils who have an interest in and aptitude for the subject, but who do not intend to take the subject beyond the A Level.



ART

What assessments will I have to take to get my qualification?

Advanced Level (AL)

- Component 1: Personal Investigation - 60%
- Pupils will create supporting studies, personal outcomes and a related study (minimum 1000 word continuous prose).
- Component 2: Externally Set Task - 40%
- Pupils will create preparatory studies and a personal outcome in 15 hours of sustained focus.

What could I go on to do at the end of my course?

- There are many careers in art, craft and design. Most of these require further study at an Art School, Further Education College or University. Most pupils do a one year Foundation course at an Art College before applying to degree courses in more specialist areas of Art and Design.
- For further information on this subject please speak to the Head of Art.



BIOLOGY

WHAT DO I NEED TO KNOW OR BE ABLE TO DO BEFORE TAKING THIS COURSE?

- We recommend that you start the course with at least a grade 6 in Biology.
- You should also have at least a grade 4 in GCSE Mathematics, as numerical and mathematical skills are important and examined in Biology.
- You will need to be able to communicate effectively, be able to plan and carry out research and think critically about problems.

DO I NEED A GCSE IN THIS SUBJECT?

Essential

MINIMUM GCSE GRADE SHOULD I AIM FOR TO STUDY THIS SUBJECT?

6

DO I NEED ADDITIONAL GCSES AT A CERTAIN GRADE TO ACCESS?

Mathematics Grade 4

What will I learn?

- Biology is a fascinating subject and great to learn about, but there is more to it than that. In Biology you will develop practical skills by planning experiments, collecting data, analysing experimental results and making conclusions.
- You will also learn how scientific models are developed and the applications and implications of Biology.

What kind of pupil is this course suitable for?

- Biology at A Level is suitable if you: have an interest in and enjoy Biology and want to find out about how things work in the biological world by application of imaginative, logical thinking.
- Want to use Biology to progress onto further studies in Higher Education or support other qualifications or enter Biology-based employment.
- Are studying other relevant courses such as Chemistry, Geography or Psychology and want to take another course that will support those studies.



BIOLOGY

What assessments will I have to take to get my qualification?

The qualification is assessed through three two-hour papers:

Paper 1: Topics 1-4

Paper 2: Topics 5-8

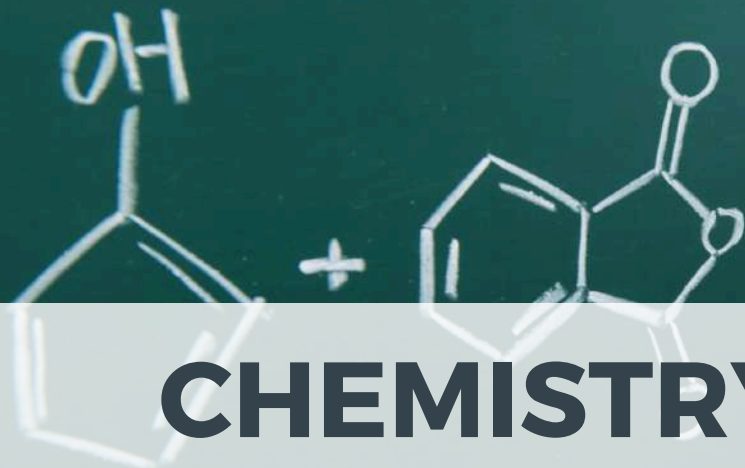
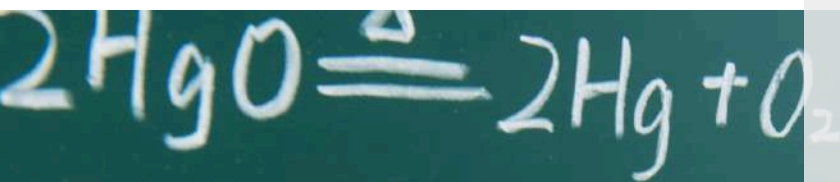
Paper 3: Topics 1-8 *including an essay style question.*

Practical work

You will undertake a number of practicals over the course. You will be assessed in 12 practical assignments for a variety of skills and the experiments may be referred to in the written exams.

What could I go on to do at the end of my course?

Studying Biology at A level could give you access to a range of university degrees and careers such as marine biology, veterinary science, education or research.



CHEMISTRY

WHAT DO I NEED TO KNOW OR BE ABLE TO DO BEFORE TAKING THIS COURSE?

- To be successful in this course a pupil needs to hold at least a grade 7 in GCSE Chemistry, a grade B in IGCSE Chemistry or at least AB grades in IGCSE: Science (Double Award), in addition to a top or high GCSE grade in Mathematics.

DO I NEED A GCSE IN THIS SUBJECT?

Yes or equivalent

MINIMUM GCSE GRADE SHOULD I AIM FOR TO STUDY THIS SUBJECT?

Grade 7 essential

DO I NEED ADDITIONAL GCSES AT A CERTAIN GRADE TO ACCESS?

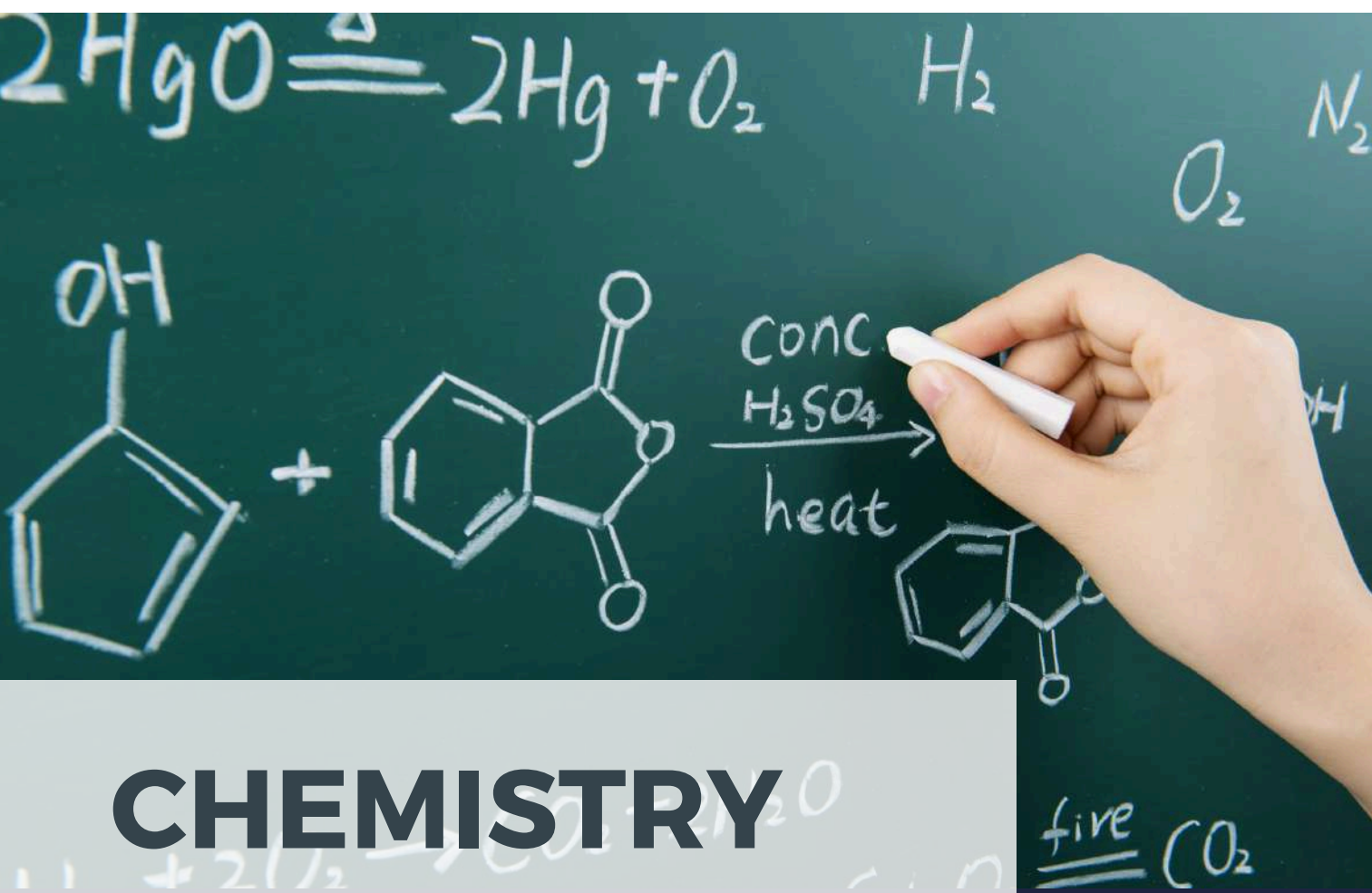
Mathematics grade 7 desirable

What will I learn?

- The core topics are: Stoichiometry, Atomic theory, Periodicity, Bonding, Energetics, Kinetics, Equilibrium, Acids and bases, Oxidation and reduction and Organic chemistry. The more detailed Higher Level work, based on the same topics, will be incorporated and assessed as and when it's appropriate.
- Chemistry is an experimental science. It therefore combines both investigative practical skills and the academic ability of the pupil. The course aims to develop knowledge and understanding of the scientific facts and concepts that are essential to the study of Chemistry.

What kind of pupil is this course suitable for?

- A Level in Chemistry is ambitious, demanding, rigorous, inclusive and an empowering "world class qualification" that has extensive international comparability of subject content against the highest performing jurisdictions in the world. It is one of the highest regarded and rewarding qualifications and it prepares pupils very well for the changing demands of employment and further study. It is a course that engages and inspires scientists of the future. A pupil should enjoy practical chemistry and have good investigative skills and an enjoyment of theoretical science.



CHEMISTRY

What assessments will I have to take to get my qualification?

Lower Sixth pupils are taught the AS course and pupils who do not intend to study the subject further to A Level standard can take external examinations (two examination papers) and certificate with an AS qualification. Internal mock exam assessments take place twice a year. In Upper Sixth, pupils complete further studies towards the A-level qualification. Internal mock examinations assess progress and performance prior to pupils sitting three externally marked written papers in May/June of the Upper Sixth year. Pupils also complete a Science Practical Endorsement, which does not contribute to the overall exam grade, but is recorded as a pass or unclassified on the pupil's examination certificate.

What could I go on to do at the end of my course?

Holding an A Level qualification in Chemistry is a pre-requisite for university courses in Chemistry, Nanotechnology and other related disciplines, and for many other courses such as Medicine, Pharmacy, Veterinary Science, Dentistry, Biological and Environmental Sciences, Metallurgy and Material Science, Biotechnology, Forensic Science and Engineering, to name just a few. As a logical subject, it is also much valued by professions such as Law, Accountancy, Economics, Business and Politics. Graduate chemists are to be found in a wide range of careers, and in top positions within industry, education, research, the environment, politics, scientific bodies, business and finance.



WHAT DO I NEED TO KNOW OR BE ABLE TO DO BEFORE TAKING THIS COURSE?

- It is important that pupils are genuinely interested in learning and discovering how products and artefacts are designed and manufactured.
- The study of Product Design should be of interest to those pupils who wish to broaden their GCSE course. Other subjects that compliment Product Design are Physics, Maths and Art.
- However, pupils may wish to choose Product Design as a contrasting subject to a wide range of other choices.

DESIGN & TECHNOLOGY (PRODUCT DESIGN)

DO I NEED A GCSE IN THIS SUBJECT?

Desirable

MINIMUM GCSE GRADE SHOULD I AIM FOR TO STUDY THIS SUBJECT?

Grade 6 or higher

DO I NEED ADDITIONAL GCSES AT A CERTAIN GRADE TO ACCESS?

Good result in English & Mathematics

What will I learn?

- The distinguishing feature of Product Design is its practical nature. Knowledge and understanding is not to be acquired purely for its own sake, but in order to apply it to the solution of practical problems which arise in everyday life and in industrial and commercial contexts. Underpinning all learning are the designing and making skills that make use of knowledge and understanding in order to produce outcomes which solve a problem and satisfy a design brief. Product Design offers candidates the opportunity to study, propose and realise prototype solutions to design problems, using similar methods to those used in the real world of product manufacture and graphic design.

What kind of pupil is this course suitable for?

- Fundamentally, Product Design is for any pupil who is self-motivated, a good project manager and has the ability to be resilient, particularly regarding the highlight of all Design and Technology education, project work. Project work requires that the individual is able to balance the requirements of their course work alongside their other subjects, and has the ability to communicate effectively with others, most notably their client.



DESIGN & TECHNOLOGY

- Product Design candidates are able to design and make products focusing on any material in the specification. Candidates should design and develop a product that solves a tangible problem and which utilises materials and manufacturing processes relevant to the needs of a modern consumer society. Candidates must work for a client. Candidates are expected to show that they have analysed and researched the problem area in depth and that they can use this data to create a varied and innovative selection of initial ideas. Aspects of the initial ideas should be developed to create 2-D and 3-D conceptual models.
- Candidates will then plan in detail how they intend to construct their prototype. Using the facilities available to them, candidates should attempt the manufacture of their idea. The aim is for all candidates to produce a well-made product which takes into consideration modern manufacturing methods, quality control and health and safety issues. Candidates must be flexible enough to adapt, change and develop their work as invariably changes will have to be made. Candidates will be expected to show good communication skills; sketching will be vital as will the ability to use Microsoft PowerPoint to present all of the design work.



DESIGN & TECHNOLOGY

What assessments will I have to take to get my qualification?

There are three units that make up the qualification as follows:

- Paper 1 Technical principles – this is a 2½ hour written paper which accounts for 30% of the overall grade.
- Paper 2 Design and making principles – this is a 1½ hour paper written which accounts for 20% of the overall grade.
- Non-examined Assessment Design and Make Project – as described, this requires the pupils to produce a design portfolio and practical outcome for a client and is worth 50% of the overall grade.

What could I go on to do at the end of my course?

A qualification in A Level Design and Technology: Product Design will help candidates gain access to institutes of Higher or Further Education. Alternatively, they may wish to use this qualification to help gain access to study a wide range of design-based courses. Typically, the qualification could lead to a potential career in areas such as architecture, product design, interior design, graphic design, or teaching.

WHAT DO I NEED TO KNOW OR BE ABLE TO DO BEFORE TAKING THIS COURSE?

- You will need skills in two different areas: practical and theoretical. Not only do you need to enjoy reading, and be able to write essays, but you also need a commitment to live theatre and a capacity to work collaboratively with your peers, on the practical elements of the course.

DRAMA & THEATRE STUDIES

DO I NEED A GCSE IN THIS SUBJECT?

Desirable

MINIMUM GCSE GRADE SHOULD I AIM FOR TO STUDY THIS SUBJECT?

6

DO I NEED ADDITIONAL GCSES AT A CERTAIN GRADE TO ACCESS?

No

What will I learn?

- This qualification emphasises practical creativity alongside research and theoretical understanding. Pupils learn through experience, seeing theatre and making theatre for themselves. Pupils are introduced to a wide range of theatrical styles and contexts as they explore plays practically, devise and work on performances.
- Pupils choose to develop as a:
 - performer
 - designer (lighting, sound, set, costume, puppets)
 - director
 - combination of these.

What kind of pupil is this course suitable for?

- Someone who loves performing or enjoys working behind the scenes in technical or design. Who enjoys going to the theatre and creating, researching and discovering independently.



DRAMA & THEATRE STUDIES

What assessments will I have to take to get my qualification?

Component 1 *Theatre Workshop - Non-exam assessment: internally assessed, externally moderated 20% of qualification*

Learners will be assessed on either acting or design. Learners participate in the creation, development and performance of a piece of theatre based on a reinterpretation of an extract from a text chosen from a list supplied by WJEC. The piece must be developed using the techniques and working methods of either an influential theatre practitioner or a recognised theatre company. Learners must produce:

- a realisation of the performance or design
- a creative log.

Component 2 *Text in Action - Non-exam assessment: externally assessed by a visiting examiner 40% of qualification*

Learners will be assessed on either acting or design. Learners participate in the creation, development and performance of two pieces of theatre based on a stimulus supplied by WJEC: 1. a devised piece using the techniques and working methods of either an influential theatre practitioner or a recognised theatre company (a different practitioner or company to that chosen for Component 1) 2. an extract from a text in a different style chosen by the learner. Learners must realise their performance live for the visiting examiner. Learners choosing design must also give a 5-10 minute presentation of their design to the examiner. Learners produce a process and evaluation report within one week of completion of the practical work.



DRAMA & THEATRE STUDIES

What assessments will I have to take to get my qualification?

Component 3 *Text in Performance* Written examination: 2 hour 30 minutes 40% of qualification

Sections A and B Open book: Clean copies (no annotation) of the two complete texts chosen must be taken into the examination. Two questions, based on two different texts, one written pre-1956 and one written post-1956. Pre-1956: Hedda Gabler, Henrik Ibsen Post-1956: Chimerica, Lucy Kirkwood Section C Closed book: The extract of text required for answering the questions will be printed on the examination paper. A question based on a specified extract from: The Curious Incident of the Dog in the Night Time, Mark Haddon, adapted by Simon Stephens. Details of the 10-15 minute extract will be released during the first week of March, in the year in which the examination is to be taken.

What could I go on to do at the end of my course?

Pupils who study this course will enhance their skills in creative thinking, teamwork, analysis and presentation skills. Pupils can progress from this course into a number of career areas either by further study or by direct entry to the job market. Examples of related roles that pupils may pursue could include Actor, Stage Manager, Arts Administrator, Dramatherapist and Television Production Assistant. Business enjoys the pupils who have taken Drama A Level as they are often creative thinkers with good problem-solving skills. It is also a good subject to study if you wish to go in to law.



ENGLISH LITERATURE

WHAT DO I NEED TO KNOW OR BE ABLE TO DO BEFORE TAKING THIS COURSE?

- English Literature is regarded as a highly academic qualification and is named as a facilitating subject for the Russell Group of universities. It is recognised as a rigorous course which develops lifelong skills in understanding, analysis and communication. Text choices for the course will not only play to the individual strengths of experienced and enthusiastic teachers, but aim to be texts which will be enjoyed by pupils. The course is relevant and engaging and approaches the study of literature through the lens of historicism. It encourages study of eight texts across a variety of genres as core content, with further independent wider reading.

DO I NEED A GCSE IN THIS SUBJECT?

Essential

MINIMUM GCSE GRADE SHOULD I AIM FOR TO STUDY THIS SUBJECT?

6

DO I NEED ADDITIONAL GCSES AT A CERTAIN GRADE TO ACCESS?

No

What will I learn?

- You will, of course, learn much about the set texts studied for A Level and about the differences between texts that have been written in different genres and produced at different times. Every member of staff in the department is passionate about literature and you will benefit from their enthusiasm and knowledge. More fundamentally, however, you will learn how to read and how to write: how to read critically and imaginatively and how to write with precision and in a critical style. You will develop skills of argumentation, and will learn how to analyse and evaluate writers' choices, as well as how to compare and contrast texts and ideas.

What kind of pupil is this course suitable for?

- English provides many opportunities to work both independently and collaboratively so will suit a wide range of different learning styles. This course is suitable for pupils who enjoy reading, literature, and debate, and who enjoy grappling with sometimes complex ideas. This course will also appeal to you if you enjoy finding out more about the historical, social and cultural contexts in which texts are read and produced. You need to be willing to have a go, to argue your case, and perhaps even to challenge accepted or conventional views – in short, to contribute fully to the life of the class.



ENGLISH LITERATURE

- Exploration and analysis of unseen poetry and prose is also a component part of the course. This is one of the most challenging subjects you can take for A Level, but it is also incredibly rewarding, should you choose to undertake and commit to this course. You need to have a real passion for literature, enjoy reading widely and voraciously. You need to be somebody who enjoys reading material that challenges you, and you need to be able to work independently, as so much of your study in this A Level will be independent work. This is a great preparation for university life, but likely to result in poor grades if you cannot manage this. An open mind, and a willingness to develop and express your views on texts and the issues raised by them is very important.
- Along the way, you will study the context in which texts are produced and consumed and how social, historical and cultural factors influence the choices that writers make. English will help you develop important study skills, such as good organisational habits, effective time management and the ability to work independently. Crucially, it should enable you to grow in confidence as you practise expressing your views in a safe and supportive classroom environment, and listening to and building upon the views of others. Hopefully, you will also develop an enquiring mind and a lifelong love of literature!



ENGLISH LITERATURE

What assessments will I have to take to get my qualification?

You will take two examinations at the end of Upper Sixth. You will write about prose texts, drama texts, and some poetry, as well as unseen material. You will also produce two coursework essays which constitutes 20% of the overall mark for the course.

- Component 1: Drama and Poetry pre-1900
- Component 2: Comparative and contextual study
- Component 3: Literature post-1900

What could I go on to do at the end of my course?

Studying English Literature opens many doors and closes very few - it is a challenging and academically rigorous subject and is highly regarded by universities. Obviously, you could study English Literature at university, but the subject will also prove invaluable should you go on to study courses such as History, Law, or Politics – any subject, really, which requires you to demonstrate skills of analysis and argumentation and a fluent writing style. Some students of English work in journalism or the media, but also in government and the civil service, culture, including museum and gallery work, or librarianship. Should you choose to go to university, you could later undertake postgraduate work in any number of different areas.

WHAT DO I NEED TO KNOW OR BE ABLE TO DO BEFORE TAKING THIS COURSE?

- The attendance of EAL classes depends on the language assessment that our Year 12 pupils sit on their arrival to the School. If their language level is below B2 CEFR or they do not hold a grade 5/6 in GCSE English, they will be required to take the Academic module of the IELTS.

ENGLISH AS AN ADDITIONAL LANGUAGE

**DO I NEED A GCSE
IN THIS SUBJECT?**

N/A

**MINIMUM GCSE
GRADE SHOULD I
AIM FOR TO STUDY
THIS SUBJECT?**

N/A

**DO I NEED
ADDITIONAL
GCSES AT A
CERTAIN GRADE
TO ACCESS?**

N/A

What will I learn?

- You will improve your English language skills; when you are preparing for the IELTS exam you are practising all four skills, that is: Listening, Reading, Writing and Speaking.
- You will also gain a better knowledge of the English that you need for the A level course and the undergraduate study in English. Also, you will be preparing for a widely recognised certification that is accepted by the universities around the world.

What kind of pupil is this course suitable for?

- The EAL lessons are aimed at our pupils from overseas who need improved fluency in English. They will receive expert tuition in all skills in small groups where their specific areas of need are addressed. Pupils are prepared for widely recognised IELTS exam, in preparation for entry to English-speaking universities. Cross-curricular support can be also given as and when necessary.



ENGLISH AS AN ADDITIONAL LANGUAGE

What assessments will I have to take to get my qualification?

Our Sixth Formers are regularly assessed throughout their time in the Sixth Form. With the data, the department is able to predict IELTS scores and are able to advise the pupils accordingly on when it is best to take the IELTS.

What could I go on to do at the end of my course?

You will be able to take the IELTS test and provide an objective assessment of your English language skills for your university or future employer.

WHAT DO I NEED TO KNOW OR BE ABLE TO DO BEFORE TAKING THIS COURSE?

- A GCSE in Geography will equip you with the desired subject knowledge as a starting point for A Level. An interest and understanding of global issues such as climate change, geopolitics, the global economic system and changes in industry would be beneficial too. The examinations are predominantly essay based so an ability to write extended evidence based answers is essential.

GEOGRAPHY

DO I NEED A GCSE IN THIS SUBJECT?

Desirable

MINIMUM GCSE GRADE SHOULD I AIM FOR TO STUDY THIS SUBJECT?

5

DO I NEED ADDITIONAL GCSES AT A CERTAIN GRADE TO ACCESS?

English & Mathematics
Grade 4

What will I learn?

- A level Geography gives pupils the opportunity to develop an in-depth understanding of physical and human Geography, the complexity of people and environmental questions and issues, and to become critical, reflective and independent learners. The course offers an issue-based approach to studying Geography, which allows pupils to debate, explore and evaluate contemporary geographical questions and issues such as the consequences of globalisation, responses to hazards, water insecurity and climate change. In each area of the A Level, pupils will consider the attitudes and actions of decision makers, consider their own values and attitudes to the issues being studied and support their learning of ideas through the study of specific case studies. Pupils also develop a variety of geographical skills through fieldwork which will broaden and deepen existing knowledge and be employed with a greater degree of independence in their learning.

What kind of pupil is this course suitable for?

- Geography pupils tend to be problem solvers, enquirers, able to judge opinion and facts and be able to be self-managing in respect of fieldwork and coursework. Critical thinking and an ability to challenge long held beliefs is also key.



GEOGRAPHY

What assessments will I have to take to get my qualification?

Physical Geography - Paper 1 (30%) 2hr 15 minutes · Tectonic Processes and Hazards · Coastal Landscapes and Change · The Water Cycle and Water Insecurity · The Carbon Cycle and Energy Insecurity · Climate Change futures The examination may include short open, open response and resource-linked questions. The examination includes 12-mark and 20-mark extended writing questions.

Human Geography - Paper 2 (30%) 2hr 15 minutes · Globalisation · Regenerating places · Superpower Geography · Migration, Identity and Sovereignty OR Health, Human Rights and Intervention The examination may include short open, open response and resource-linked questions. The examination includes 12-mark and 20-mark extended writing questions

Synoptic Paper - Paper 3 (20%) 2hr 15 minutes · This paper contains three synoptic themes within the compulsory content areas · Players · Attitudes and actions · Futures and uncertainties The examination may include short open, open response and resource-linked questions. The examination includes 8-mark, 18-mark and 24-mark extended writing questions.



GEOGRAPHY

What assessments will I have to take to get my qualification?

Coursework: Independent Investigation (20%) · This will be done following a fieldwork trip to collect data. The data will be analysed and evaluated through a write up of between 3000-4000 words · This is internally assessed and externally moderated.

What could I go on to do at the end of my course?

Geography is a broad-based academic subject which will open options for you in your future. Employers and universities see Geography as a robust academic subject rich in skills, knowledge and understanding. As a subject linking the Arts and Sciences it is highly flexible in terms of what you can combine it with, both at GCSE and A Level. If you choose to take Geography at university, there are hundreds of courses to choose from and the range of career areas accessed by graduates of Geography will probably surprise you. If you are considering not going to university, Geography can open doors to careers in the world of business, law, human rights, international relations, welfare, travel, GIS, surveying and planning.

WHAT DO I NEED TO KNOW OR BE ABLE TO DO BEFORE TAKING THIS COURSE?

- Have a passion for the past. This is essential.
- Have strong English language and literacy skills, as evidenced by your GCSE/IGCSE English level.
- Have a broad, enquiring and open mind.
- Enjoy arguing and debating – both orally and in writing.
- Enjoy reading, thinking and writing. This is an academic, text-based course.

HISTORY

DO I NEED A GCSE IN THIS SUBJECT?

Yes, although this isn't an absolute prerequisite

MINIMUM GCSE GRADE SHOULD I AIM FOR TO STUDY THIS SUBJECT?

Level 6 or above in GCSE History (if studied).

DO I NEED ADDITIONAL GCSES AT A CERTAIN GRADE TO ACCESS?

Level 6 or above in GCSE English.

What will I learn?

- Spain in the Age of Discovery, 1469–1598 (Breadth study)
- Wars and Welfare: Britain in Transition, 1906–1957 (Depth study)
- Historical Investigation - enabling pupils to develop the skills, knowledge and historical understanding acquired through the study of the examined components of the specification.

What kind of pupil is this course suitable for?

- A Level History is a suitable course for anyone who has a passion for the past. In this course you will study the history of Spain in the 15th and 16th centuries and the history of the United Kingdom in the first half of the twentieth century. In addition to this, you will also complete a Historical Investigation. This is a 3,500-4,500 word research-based extended essay on a historical subject of your own choice. This course is also suitable for anyone considering reading an arts or humanities subject at university, such as: Archaeology, International Relations (IR) History, History of Art, Law, Politics, Philosophy and Economics (PPE), Sociology or similar.



History

HISTORY

What assessments will I have to take to get my qualification?

A Level History is a two-year linear course. You will sit two x 2.30 hour papers at the end of Upper Sixth, which will assess your knowledge and understanding of the content you've learned and the skills you've developed throughout the course. These two equally weighted papers are worth 80% of the course. Questions consist of 30-mark extract-based essay questions and 25-mark essay questions. In addition to this, you will also complete a Historical Investigation. This is a 3,500–4,500 word research-based extended essay on a historical topic of your own choosing. This is worth 20% of the course.

What could I go on to do at the end of my course?

Studying A Level History is an excellent course if you want to read an arts or humanities subject at university such as: Archaeology, International Relations (IR), History, History of Art, Law, Politics, Philosophy and Economics (PPE), Sociology or similar. Beyond university, the skills you will gain in A Level History are highly sought after in most high-profile careers, including academia, advertising, the Armed Forces, the Civil or Diplomatic Service, journalism, law, teaching or similar.

WHAT DO I NEED TO KNOW OR BE ABLE TO DO BEFORE TAKING THIS COURSE?

- You must be confident at algebraic manipulation such as expanding brackets, factorising, solving quadratic equations, plotting quadratic graphs, and solving linear inequalities. The ability to problem solve and structure your working is essential.

MATHEMATICS

DO I NEED A GCSE IN THIS SUBJECT?

Essential

MINIMUM GCSE GRADE SHOULD I AIM FOR TO STUDY THIS SUBJECT?

Level 7 or higher

DO I NEED ADDITIONAL GCSES AT A CERTAIN GRADE TO ACCESS?

GCSE in Physics would be beneficial.

What will I learn?

- Pure Mathematics (66% of the A Level: Paper 1 and 2)

When studying Pure Mathematics at A level you will be extending your knowledge of such topics as algebra and co-ordinate geometry to lead you to an understanding of calculus.

- Mechanics (17% of the A Level: Paper 3)

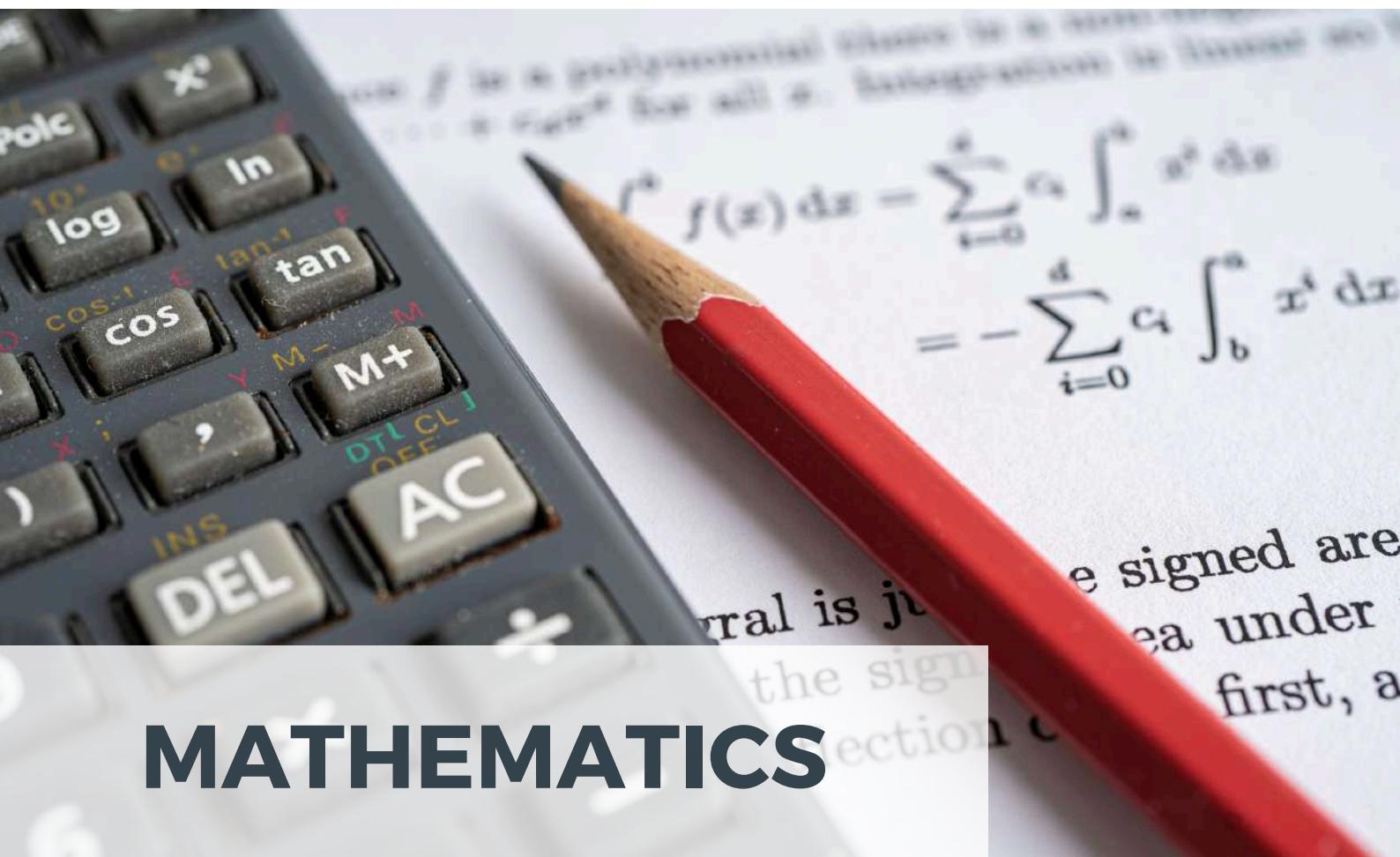
In Mechanics you will learn how to describe mathematically the motion of objects and how they respond to forces acting upon them, from cars in the street to satellites revolving around a planet.

- Statistics (17% of the A Level: Paper 3)

In Statistics you will learn how to analyse and summarise numerical data in order to arrive at conclusions about it.

What kind of pupil is this course suitable for?

- A pupil will enjoy this course if they are analytical, a problem solver and mathematics comes naturally to them. A Level Mathematics is a useful course to take as it opens up many doors at university from Engineering to Accountancy.



MATHEMATICS

What assessments will I have to take to get my qualification?

You can expect regular tests, set by your teacher, on recently completed topics throughout the course. Your scores will indicate to your teacher how effectively you are learning the skills being covered in the lessons. They will be able to predict how you are likely to perform on the external examinations set by the Awarding Body. The A level is externally assessed in the June of the Upper Sixth by three written examinations each of 2 hours; Papers 1 and 2 are based upon Pure content and Paper 3 is based upon the Applied content (Statistics and Mechanics).

What could I go on to do at the end of my course?

Higher Education courses or careers that either require A level Mathematics or are strongly related include: Economics, Accountancy, Computing, Medicine, Teaching, Information Technology, Architecture, Psychology, Environmental Studies and Engineering.

WHAT DO I NEED TO KNOW OR BE ABLE TO DO BEFORE TAKING THIS COURSE?

- You must be very confident at algebraic manipulation such as expanding brackets, factorising, solving quadratic equations, plotting quadratic graphs and solving linear inequalities.
- The ability to problem solve and structure your working is essential.

FURTHER MATHEMATICS

DO I NEED A GCSE IN THIS SUBJECT?

Essential

MINIMUM GCSE GRADE SHOULD I AIM FOR TO STUDY THIS SUBJECT?

Level 8+

DO I NEED ADDITIONAL GCSES AT A CERTAIN GRADE TO ACCESS?

GCSE in Physics would be beneficial.

What will I learn?

- Papers 1 and 2 – Core Pure Mathematics (50%) Pupils taking Further Mathematics will complete A Level Mathematics during the Lower Sixth and start A Level Further Mathematics at the beginning of the Upper Sixth. An advanced look at mathematical topics needed for Mathematics at university.
- Paper 3 – Further Pure Mathematics 1 (25%) A delve into advanced pure topics such as Differential calculus, Conics and Sequences.
- Paper 4 – Option topic (25%) This paper is chosen as a consensus between the class towards the end of the Lower Sixth. Pupils have the opportunity to study one of Further Pure Mathematics 2, Further Statistics 1 or Further Mechanics 1.

What kind of pupil is this course suitable for?

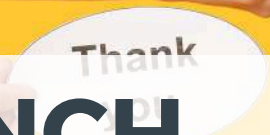
- Pupils will enjoy this course if they are analytical, a problem solver and mathematics come naturally to them. A Level Further Mathematics is usually only taken if the pupil is planning to study Mathematics at university.



FRENCH & SPANISH

WHAT DO I NEED TO KNOW OR BE ABLE TO DO BEFORE TAKING THIS COURSE?

- Most pupils will normally have achieved at least the equivalent of GCSE grade 6 in the relevant language before taking this course. You will need to feel confident at this level in the four language skills of Listening, Reading, Writing and Speaking. Some knowledge and understanding of the culture and way of life of the target-language country would be of benefit with a view to developing an understanding of, and exploring in much more depth, the topic areas that you will have covered at GCSE. A Level Languages will rapidly build on and develop your existing knowledge of the language and culture to transform you into an even more competent and fluent linguist, able to understand, discuss and express your views on a wide range of contemporary issues.



DO I NEED A GCSE IN THIS SUBJECT?	MINIMUM GCSE GRADE SHOULD I AIM FOR TO STUDY THIS SUBJECT?	DO I NEED ADDITIONAL GCSES AT A CERTAIN GRADE TO ACCESS?
Desirable	6	No

What will I learn?

- The course will help you to develop your general study skills, but most of all you will learn to communicate at a higher level in the language that you have chosen. You will also learn much more about a wide range of aspects of the society or societies in which the language is spoken.
- You will also develop your analytical skills to a higher level. Whether you want to use languages for work, for further study, training, or for leisure, this course will equip you with the necessary skills and knowledge.

What kind of pupil is this course suitable for?

- If you are interested in languages and communication, and you enjoy learning about other cultures and ways of life, then the Modern Foreign Languages course could be suitable for you. Similarly, if you are interested in the business world, in travel or tourism, in literature, or in journalism and the media, then you are also likely to find the course appropriate. There are a number of options in the course where you can choose your topic or question to suit your interests.



FRENCH, & SPANISH

What assessments will I have to take to get my qualification?

Paper 1: Listening, reading and writing (50%)

Paper 2: Written response to film and text (or two texts) (20%)

Paper 3: Speaking - Individual research Project and Discussion (30%)

Themes covered • Aspects of French or Spanish-speaking society: Current trends • Artistic Culture in the French or Spanish-speaking World • Aspects of French or Spanish-speaking society: Current Issues • Aspects of political life in the French or Spanish-speaking world.

What could I go on to do at the end of my course?

There will be a range of opportunities open to you where you can continue to use and further develop your language skills and knowledge of contemporary society. Some pupils choose to do degree courses in languages; others choose to pursue a Higher Education course in another subject, but choose a language option alongside it. Having a language at A Level will certainly improve your employability, in particular with companies which have international branches.



FRENCH, & SPANISH

Whether you are interested in continuing your studies or working at home or abroad, a language course at A Level is an excellent step towards achieving your goals. The A Level syllabus provides a meaningful communicational and linguistic course for career opportunities, such as translating (UN/EU/Foreign Office), interpreting, teaching, bi-lingual secretarial work, broadcasting, civil service, librarianship and international banking.

Many universities offer joint courses involving a modern language with a wide range of arts, science, law and business subjects. As you are probably already aware, fewer and fewer pupils of your age are studying languages, and by taking a Language A level you are already placing yourself in an elite group of people whose linguistic skills will no doubt be highly sought after later in life. Your knowledge of a language may well open doors to you in the future that are hard to imagine at the moment so congratulations for having made it this far and we wish you luck as you embark on your linguistic journey.



WHAT DO I NEED TO KNOW OR BE ABLE TO DO BEFORE TAKING THIS COURSE?

- Grade 6 in your instrument.
- You must be able to read music in traditional standard notation.

MUSIC

DO I NEED A GCSE IN THIS SUBJECT?

Yes

MINIMUM GCSE GRADE SHOULD I AIM FOR TO STUDY THIS SUBJECT?

6 or above

DO I NEED ADDITIONAL GCSES AT A CERTAIN GRADE TO ACCESS?

No

What will I learn?

- The course demands practical, creative and listening skills in almost equal measures. You will develop composition ideas from GCSE, learn about harmony techniques and develop your listening skills. You will be required to analyse pieces of music (from a range of periods and styles including the Classical and Romantic eras alongside Rock, Jazz and Musical Theatre) and write about your findings using musical language. The course involves taking part in school musical activities including choir, bands and major productions as well as attending and ideally participating in a number of external concerts and performances.

What kind of pupil is this course suitable for?

- Ideally, you would enjoy music in many forms and have a desire to expand your knowledge of different types of music.
- The ability to perform publicly on occasion, as well as supporting the performances of others in the group.



MUSIC

How does this breakdown?

EITHER

Performing (35%) – Total duration of Performing: 10-12 minutes
Composing (25%) – Total duration of Compositions: 4-6 minutes
Appraising (40%) – Written Exam

OR

Performing (25%) – Total duration of Performing: 6-8 minutes
Composing (35%) – Total duration of Compositions: 8-10 minutes
Appraising (40%) – Written Exam

A major benefit of studying the Eduqas A Level is the option to specialise in either Performing or Composing, therefore giving that specialism more weight in the qualification. For the Appraising component, pupils are assessed on their understanding of a range of styles including the Classical and Romantic symphony, Rock and Pop, Musical Theatre, Jazz and music from the 20th and 21st Centuries.

What could I go on to do at the end of my course?

You could go on to study at either foundation or undergraduate level in Music or Performing Arts at university or a conservatoire in the UK or overseas.



MUSIC TECHNOLOGY

DO I NEED A GCSE IN THIS SUBJECT?

Music preferred

MINIMUM GCSE GRADE SHOULD I AIM FOR TO STUDY THIS SUBJECT?

Music GCSE Grade 5 is useful but not essential.

DO I NEED ADDITIONAL GCSES AT A CERTAIN GRADE TO ACCESS?

No

What will I learn?

- Pupils will have the opportunity to work on professionally styled assignments developing music technology skills, compositional skills and understanding of how popular recordings are put together and produced.

What kind of pupil is this course suitable for?

- Much of the course is assessed practically, and utilises skills such as problem solving, identifying mistakes and rectifying them and creativity is required.



MUSIC TECHNOLOGY

What assessments will I have to take to get my qualification?

Component 1: Recording (20%): One recording, chosen from a list of 10 songs or artists supplied by Pearson, consisting of a minimum number of compulsory instruments and further additional instruments. Artists are specified by the exam board.

Component 2: Technology based composition (20%): Creating, editing, manipulating and structuring sounds to produce a technology-based composition.

Component 3: Listening and analysing (25%): A written exam using knowledge and understanding of recording and production techniques and principles, in the context of a series of unfamiliar commercial recordings.

Component 4 : Producing and analysing (35% of total marks): A written / practical exam using knowledge and understanding of editing, mixing and production techniques, to be applied to unfamiliar materials. One essay about one music technology aspect specified on the exam paper.

What could I go on to do at the end of my course?

Pupils who study Music Technology can go onto further study at university with a range of degree courses on offer including the prestigious Tonmeister course at the University of Surrey and a range of Music Production courses at Leeds College of Music and other leading colleges and universities. Careers can include sound engineering, studio production, sound design for Film & TV, composing and teaching.

WHAT DO I NEED TO KNOW OR BE ABLE TO DO BEFORE TAKING THIS COURSE?

- A willingness to embrace the subject both technically and creatively is required, all the methods and processes will be taught giving you the skills to undertake each of the components that make up the A Level.
- Good problem solving skills - Photography is a unique mix of creativity and technicality.
- You will need to provide your own DSLR (Digital Single Lens Reflex) camera to undertake this course.

PHOTOGRAPHY

DO I NEED A GCSE IN THIS SUBJECT?

Art or Photography

MINIMUM GCSE GRADE SHOULD I AIM FOR TO STUDY THIS SUBJECT?

6 in Art or Photography

DO I NEED ANY OTHER GCSES AT A CERTAIN GRADE TO ACCESS?

4+ in English

What will I learn?

- History of Photography and its many different genres
- How to analyse photographs and research the work by master photographers and contemporary lens based artists and their methods.
- Improve and develop your photographic skills ie: viewpoints, composition, depth of field etc.
- Post production of photography through digital-media in Photoshop.

What kind of pupil is this course suitable for?

- Pupils who wish to undertake art, design or media based courses in Higher or Further Education. (eg: Photography, Photojournalism, Graphics, Animation, Film making, Marketing etc.)
- Pupils who wish to take up careers in the creative industries for which foundation knowledge of photography is relevant.
- Pupils who have an interest in the subject, but who do not intend to take the subject beyond A level.



PHOTOGRAPHY

What assessments will I have to take to get my qualification?

The full A Level qualification is made up of two units:

Unit 1 Personal Investigation 60%

Candidates should produce two elements:

1. A portfolio of practical work showing their personal responses to a chosen topic or theme.
2. A related written study of a minimum of 1,000 words

Unit 2 Externally Set Assignment 40%

Pupils will create preparatory studies of a personal outcome in 15 hours of sustained focus.

What could I go on to do at the end of my course?

A Photography qualification is viewed with interest by universities as showing another aspect of a candidate's potential, and in the case of visually orientated courses it is regarded in the same way as academic subjects. Areas opened up by the course include Art Foundation, Photography, Photojournalism, Animation, Fine Art, Media, Film Studies, Advertising, Graphics, Product Design, Theatre Studies, Architecture, etc.

The background features a dark blue grid with various physics-related diagrams and equations. A prominent diagram shows a parabolic trajectory with an angle θ and a vertical axis z . Other elements include a coordinate system with x and z axes, and various mathematical symbols like λ and μ .

PHYSICS

WHAT DO I NEED TO KNOW OR BE ABLE TO DO BEFORE TAKING THIS COURSE?

- In addition to the knowledge, understanding and processing skills that you cultivated at GCSE, an ability to communicate effectively is also vital as you will need to be able to present your experimental work with accuracy both verbally and in written form, carry out research independently and think critically about problems. It would be advantageous to be taking A Level mathematics.

DO I NEED A GCSE IN THIS SUBJECT?

Essential

MINIMUM GCSE GRADE SHOULD I AIM FOR TO STUDY THIS SUBJECT?

7

DO I NEED ADDITIONAL GCSES AT A CERTAIN GRADE TO ACCESS?

7 in mathematics

What will I learn?

- There are eight core topics in the specification, together with an optional topic.
 - Measurements and their errors
 - Particles and radiation
 - Waves
 - Mechanics and materials
 - Electricity
 - Further mechanics and thermal physics
 - Fields and their consequences
 - Nuclear physics
- Possible options which may be offered during the second year of study include: astrophysics; medical physics; engineering physics; turning points in physics; and electronics.

What kind of pupil is this course suitable for?

- If you have curiosity, determination and an enthusiasm for physics;
- have a willingness to give things a go, make mistakes and try again;
- want to find out about how things work and enjoy solving problems; and enjoy carrying out investigations by the application of imaginative, logical thinking.



PHYSICS

PHYSICS

What assessments will I have to take to get my qualification?

Assessment is by written examination only, with the content of the papers employing a variety of question styles ranging from long written answers to multiple choice questions. Questions will be included on the practical skills developed during the course.

What could I go on to do at the end of my course?

Physics can provide a pathway to a huge number of careers, from engineering, to medicine, architecture, IT, business, finance, research, communications and many more. The problemsolving and analytical skills of a physicist are highly prized in many fields. An A Level in this subject provides a foundation for a vast array of Higher and Further Education courses. For example, studying physics could support a move on to further studies including a BTEC or a degree course such as: physics or the other sciences; veterinary medicine; medicine; midwifery; architecture; ecology; meteorology; metrology; nanotechnology; space exploration; and all types of engineering amongst many, many others.



POLITICS

WHAT DO I NEED TO KNOW OR BE ABLE TO DO BEFORE TAKING THIS COURSE?

- Have a strong interest in politics and current affairs. This is essential.
- Have strong English language and literacy skills, as evidenced by your GCSE/IGCSE English level.
- Have a broad, enquiring, and open mind. Enjoy arguing and debating – both orally and in writing.
- Enjoy reading, thinking and writing. This is an academic, text-based course.

DO I NEED A GCSE IN THIS SUBJECT?

N/A

MINIMUM GCSE GRADE SHOULD I AIM FOR TO STUDY THIS SUBJECT?

6 or above English History (if studied).

DO I NEED ANY OTHER GCSES AT A CERTAIN GRADE TO ACCESS?

History would be an advantage.

What will I learn?

- Paper 1: The Government and Politics of the UK
- Paper 2: The Government and Politics of the USA and Comparative Politics
- Paper 3: Political Ideas Core ideologies:
 - Conservatism
 - Liberalism
 - Socialism
 Optional ideology: Nationalism

This course is also suitable for anyone considering reading an arts or humanities subject at university, such as: Archaeology, International Relations (IR) History, History of Art, Law, Politics, Philosophy and Economics (PPE), Sociology or similar.

What kind of pupil is this course suitable for?

- A Level Politics is a suitable course for anyone who has a strong interest in politics and current affairs. In this course you will study the governments and political systems of the United Kingdom and the United States – their origins, what they are, how they work, and what challenges they face. You will have to compare and contrast them to one another. In addition to this, you will also study four great political ideologies – conservatism, liberalism, nationalism and socialism.



What assessments will I have to take to get my qualification?

A Level Politics is a two-year linear course. You will sit three x 2 hour papers at the end of Upper Sixth, which will assess your knowledge and understanding of the content you've learned and the skills you've developed throughout the course. All three papers are equally-weighted. Questions consist of a range of shorter 9-mark questions and longer 25-mark essay and extract-based essay questions. There is no coursework in A Level Politics.

What could I go on to do at the end of my course?

Studying A Level Politics is an excellent course if you want to read an arts or humanities subject at university such as: Archaeology, International Relations (IR) History, History of Art, Law, Politics, Philosophy and Economics (PPE), Sociology or similar. Beyond university, the skills you will gain in A Level Politics are highly sought after in most high-profile careers, including academia, advertising, the Armed Forces, the Civil or Diplomatic Service, journalism, law, teaching or similar.

WHAT DO I NEED TO KNOW OR BE ABLE TO DO BEFORE TAKING THIS COURSE?

- You don't need any prior knowledge of Psychology, but you do need a solid complement of GCSEs. The requirement to write essays, in which you present argument for and against an issue, means that you should also have a good grasp of the English language. As Psychology is a science, a GCSE in Science (especially Biology) would be advisable, and you do need to be comfortable with numbers. Most important, though, is that you have a genuine curiosity about the way humans think and behave.

PSYCHOLOGY

DO I NEED A GCSE IN THIS SUBJECT?

No

MINIMUM GCSE GRADE SHOULD I AIM FOR TO STUDY THIS SUBJECT?

N/A

DO I NEED ADDITIONAL GCSES AT A CERTAIN GRADE TO ACCESS?

5 or above in Biology or Chemistry, Mathematics and English Language

What will I learn?

- The course is broken into three parts.
- 1 General topics • Approaches in Psychology looks at the Psychodynamic, Behaviourist, Cognitive, Humanist and Biological approaches to understanding behaviour.
- 2 Key theories • Social psychology is about the power of the situation and other people to influence individual behaviour, and includes the study of conformity, obedience and minority influence.
- 3 Applications • Developmental psychology considers how people change and develop throughout their lives, with a particular focus on cognitive development and attachment theory.

What kind of pupil is this course suitable for?

- Suited to pupils who can absorb and apply knowledge in different contexts, who are open-minded to there being multiple explanations for each behaviour or phenomenon, who can think critically about the theories and their supporting research, and who enjoy discussions with classmates about psychological phenomena. Pupils tend to choose Psychology because they a) are interested in pursuing a degree in Psychology, b) want to try a new subject, or c) have a genuine curiosity about why we do what we do.



PSYCHOLOGY

What assessments will I have to take to get my qualification?

A Level Psychology is a linear subject, assessed at the end of two years of study. There are three examinations to assess pupils. Each of these 2 hour exams comprises a number of short questions, essay questions and scenarios to which you are required to apply your knowledge. Paper 1: Introductory Topics in Psychology (Social Influence, Memory, Attachment, and Psychopathology). Paper 2: Psychology in Context (Approaches in Psychology, Research Methods and Biopsychology). Paper 3: Issues and Options in Psychology (Section A is a compulsory section on Issues and Debates in Psychology. Sections B, C, D each contain questions on the in-depth option topics you've studied.

What could I go on to do at the end of my course?

A degree in Psychology does not require you to have studied Psychology A Level. However, many courses ask for a science subject, of which Psychology is one. A Level Psychology will provide you with the skills required of an undergraduate - an inquiring mind and the ability to use scientific research findings to support and challenge various claims about why people behave the way that they do.



WHAT DO I NEED TO KNOW OR BE ABLE TO DO BEFORE TAKING THIS COURSE?

- A good grade (6 or above) in GCSE in REP or another humanities subject like History is desirable, but not essential. You need to be good at thinking for yourself, willing to listen to others and to read and write essays on important topics. Ideally, you will have intellectual curiosity and want to explore philosophical, ethical and religious issues. Every year we have some pupils who choose A Level REP having not taken at GCSE, and often they do well.

RELIGION, ETHICS & PHILOSOPHY (REP)

DO I NEED A GCSE IN THIS SUBJECT?

Not essential

MINIMUM GCSE GRADE SHOULD I AIM FOR TO STUDY THIS SUBJECT?

Not essential

DO I NEED ADDITIONAL GCSES AT A CERTAIN GRADE TO ACCESS?

History/English Grade 5+

What will I learn?

- It is split into three areas: Philosophy of Religions, Religion and Ethics and Developments in Religious thought. In Philosophy of Religion we start about 2500 years ago in ancient Greece with Plato, Aristotle and Socrates. We work right up to present day philosophy on a variety of deep and fascinating topics that have highly transferable applications beyond religious studies and will teach you to be a rigorous logical thinker who is great at understanding different points of view and making a convincing argument. In Religion and Ethics we look at a huge array of both applied and more theoretical ideas in ethics. In Developments in Religious Thought we focus on links to Christianity and how the interaction between Christian beliefs and events/ideas in the world have influenced each other.

What kind of pupil is this course suitable for?

- There's a lot of discussion and debate, so it helps if you already have good listening skills and a desire to share your views. We also get pupils to research and present. There's a lot of writing involved. We help work with you to improve your writing skills, anyway. You will need to like reading. It's about discussing religious, philosophical and ethical concepts and practices, not about making you religious. You will need to be interested in justifying points of view you have and becoming good at formal discussion to convince people of what you think while understanding what they think.



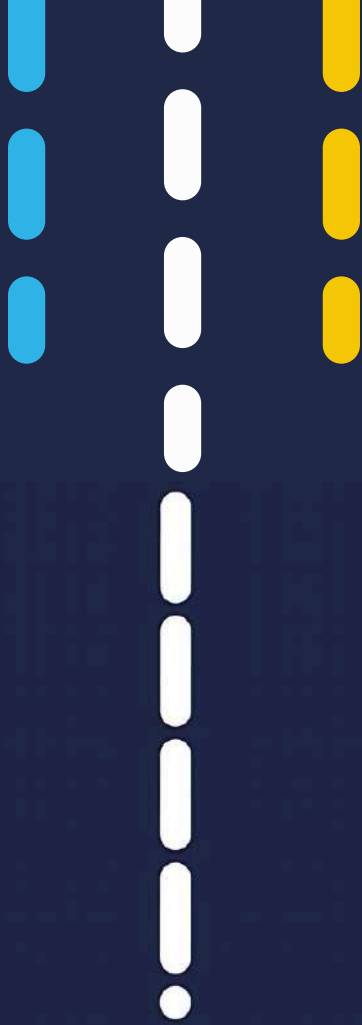
RELIGION, ETHICS & PHILOSOPHY (REP)

What assessments will I have to take to get my qualification?

There are three two-hour exam papers: Philosophy of Religion Religion and Ethics Developments in Christian Thought There is no coursework and no controlled assessment

What could I go on to do at the end of my course?

The course can be studied at degree level should you wish to pursue a career in the field of Education, Philosophy or Theology. It is also an excellent foundation for many degree courses such as those in Law, Politics and Medicine. The course is highly regarded by universities for its academic content. The 'Business Ethics' element helps pupils choosing to pursue degrees connected to Business, Management, Economics and Finance. It is also very well regarded for medicine and other areas that require a strong understanding of ethics – it is a course that teaches you a lot of transferable critical thinking, writing and reading skills alongside its content.



OCR

Oxford Cambridge and RSA

Cambridge Technicals



WHAT DO I NEED TO KNOW OR BE ABLE TO DO BEFORE TAKING THIS COURSE?

- It is not a requirement that you should have studied Business at GCSE level in order to take a Level 3 Cambridge Technical Extended Certificate in Business. It is more important that you have a strong interest in business and current affairs and want to learn how a business is organised, how it operates, how it plans and makes its decisions.
- The level of mathematical ability and written English ability is recommended to be at least grade 4 GCSE. Pupils need to be able to work independently and work to deadlines.

CAMBRIDGE TECHNICAL LEVEL 3 IN BUSINESS

DO I NEED A GCSE IN THIS SUBJECT?

Not essential

MINIMUM GCSE GRADE SHOULD I AIM FOR TO STUDY THIS SUBJECT?

4

DO I NEED ADDITIONAL GCSES AT A CERTAIN GRADE TO ACCESS?

4 in English/Mathematics

What will I learn?

- The dynamic, competitive, uncertain and frequently hostile environment in which businesses operate and how businesses adapt to their internal and external environment.
- Learn about different types of business structures and how the ownership of business and its objectives are interrelated. The importance of different business functions and how they work together. The internal workings and management of organisations.
- Over the two years of the course, pupils will study and be assessed on the following:
Mandatory units: • The Business Environment
• Working in Business • Customers and Communication.

What kind of pupil is this course suitable for?

- This course will appeal to those who have an interest in current affairs and the business world. Have an interest in how a business operates. Enjoy studying a subject that is relevant to their own lives and experiences.
- Would like to explore a subject that offers opportunities for the further study of the subject at undergraduate level . Would like to learn how to make business decisions and solve business problems.
- Pupils who perform well in coursework as well as exams will do well in this course.



CAMBRIDGE TECHNICAL LEVEL 3 IN BUSINESS

What assessments will I have to take to get my qualification?

Pupils will take at least 2 examination papers with a third exam possible (although unlikely), depending which optional units they study. They are required to carry out research into real businesses in preparation for the exams. There is the opportunity to resit each exam once. Pupils will have opportunities to practise each of the different types of questions. Pupils will have to complete assignments for the internally assessed units (likely to be 3 units, again depending on which optional units are chosen).

What could I go on to do at the end of my course?

Pupils with a Cambridge Technical Business qualification have access to a wide range of possible career and higher education opportunities. Many will go on to study the subject or related subject at undergraduate level. Alternatively, you can start a career in business armed with an excellent knowledge of how businesses operate. You will have a head start in careers within accountancy, marketing, sales and human resources.



WHAT DO I NEED TO KNOW OR BE ABLE TO DO BEFORE TAKING THIS COURSE?

- Cambridge Technicals are vocational qualifications for pupils aged 16+ and are designed with the workplace and progression to higher education in mind. The CTECH in Engineering has refreshing and exciting content that's up to date and fit for purpose, based on consultations with universities, employers and industry specialists. It has the right combination of knowledge, understanding and skills required for the 21st century. This course works well as a stand-alone course, or in combination with A Level courses such as Design and Technology, Maths and Physics, or as part of an IB programme of study.

CAMBRIDGE TECHNICAL ENGINEERING

DO I NEED A GCSE IN THIS SUBJECT?

Desirable

MINIMUM GCSE GRADE SHOULD I AIM FOR TO STUDY THIS SUBJECT?

6

DO I NEED ADDITIONAL GCSES AT A CERTAIN GRADE TO ACCESS?

Grade 5+ in Mathematics, Physics and Design Technology would be beneficial

What will I learn?

- The course will comprise six units, with the teaching being split between the Design and Technology, Maths and Physics teams. The actual units delivered may differ and will be decided upon after collaboration with the learners.

Mathematics:

Mathematics for Engineering

Physics:

Science for Engineering

Principles of Mechanical Engineering

Principles of Electrical and Electronic Engineering

Engineering

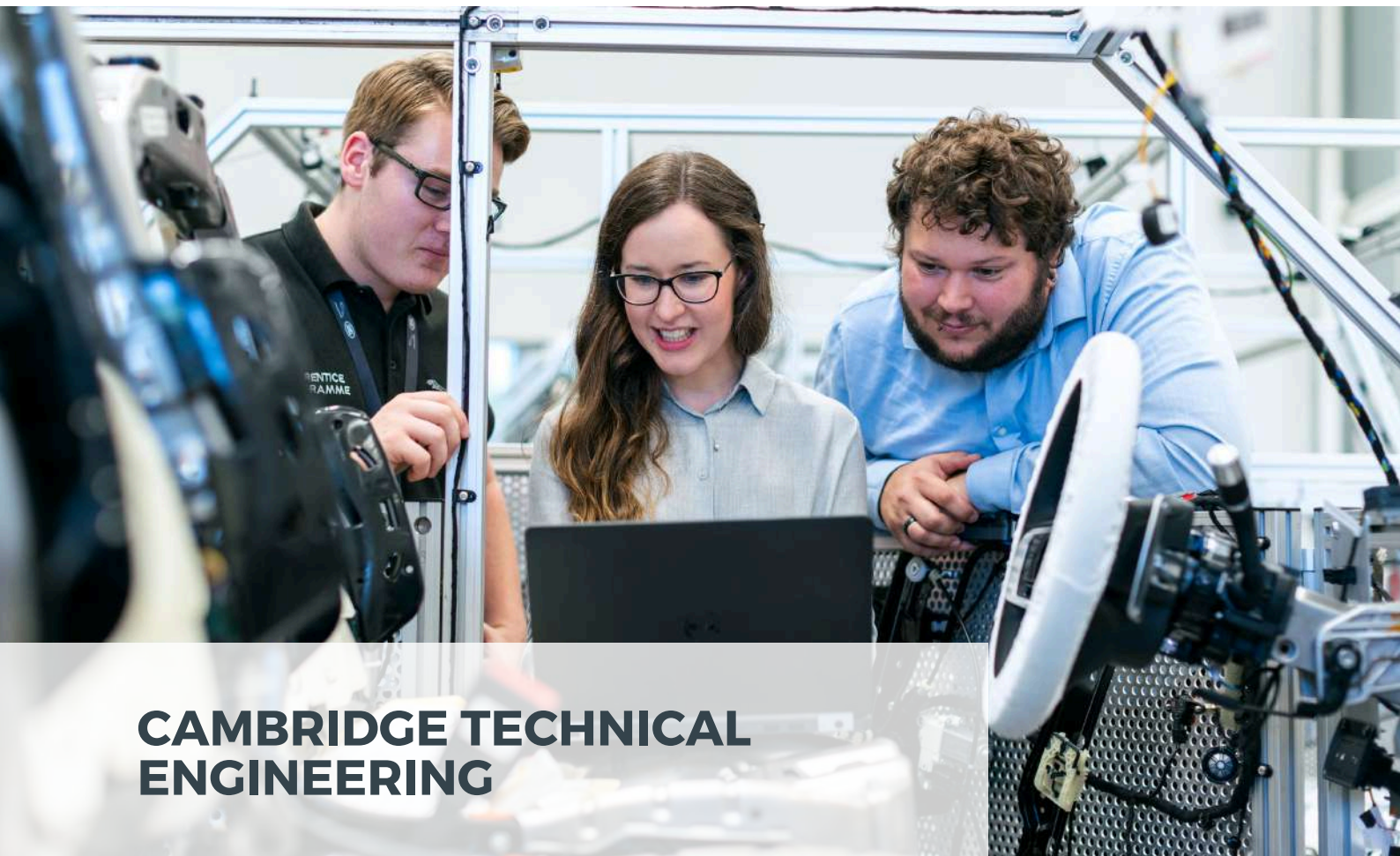
Design and Technology:

Mechanical Design

Mechanical Operations

What kind of pupil is this course suitable for?

- It is important that pupils are genuinely interested in Engineering and have a clear focus on this as a possible/probable area of work for their future. Anyone who has applied for the Arkwright Engineering Scholarships would also benefit from considering this course as it will tie in neatly with any planned Engineering futures at college, university or in the world of work.



CAMBRIDGE TECHNICAL ENGINEERING

What assessments will I have to take to get my qualification?

Units 01, 02, 03, and 04 are externally assessed by an OCR set and marked examination similar to the exams sat for most other subjects. Units 10 and 17 (see above) are internally assessed and then externally moderated by OCR. These units are similar to the Non-Examined Assessment (NEA) units in other subjects such as Design and Technology and Geography.

What could I go on to do at the end of my course?

A qualification in Engineering at this level will help candidates gain access to institutes of Higher or Further Education. Alternatively, they may wish to use this qualification to help gain access to study a wide range of Engineering focused apprenticeships. Typically, the qualification could lead to a potential career in a wide range of areas of Engineering.



WHAT DO I NEED TO KNOW OR BE ABLE TO DO BEFORE TAKING THIS COURSE?

- Cambridge Technicals are vocational qualifications for pupils aged 16+ and are designed with the workplace and progression to higher education in mind.
- The App Development route focuses on programming, mobile/web app design, and project management, which ties directly into a lot of computing and tech degrees.

CAMBRIDGE TECHNICAL INFORMATION TECHNOLOGY APP DEVELOPMENT ROUTE

DO I NEED A GCSE IN THIS SUBJECT?

Not necessary

MINIMUM GCSE GRADE SHOULD I AIM FOR TO STUDY THIS SUBJECT?

N/A

DO I NEED ADDITIONAL GCSES AT A CERTAIN GRADE TO ACCESS?

4 English

What will I learn?

Our Cambridge Advanced National in Computing Application Development provides pupils with theoretical knowledge and hands-on experience of application development, equipping them with the understanding and skills that will help prepare them for progression to undergraduate study and are relevant to the ICT practitioners sector.

Pupils will use real clients to create at least two games and two Apps.

What kind of pupil is this course suitable for?

- This course would suit individuals who have a real passion for IT and the world of App development and gaming.



CAMBRIDGE TECHNICAL INFORMATION TECHNOLOGY APP DEVELOPMENT ROUTE

What assessments will I have to take to get my qualification?

Unit 1 and Unit 2 are externally assessed exams.

Unit 15 is game development.

Unit 6 and 9 are App design and product development.

Pupils will use real clients to create at least two games and two Apps.

What could I go on to do at the end of my course?

- Software Engineering
- Mobile Application Development
- Web Development / Web Technologies
- Information Technology / Computing
- Cybersecurity

The App Development route focuses on programming, mobile/web app design, and project management, which ties directly into a lot of computing and tech degrees.



CAMBRIDGE TECHNICAL SPORT & PHYSICAL ACTIVITY

WHAT DO I NEED TO KNOW OR BE ABLE TO DO BEFORE TAKING THIS COURSE?

- To study the Cambridge Technical extended certificate or Diploma in sport and physical activity, it would be advantageous to have previously studied GCSE PE and have high levels of interest in developing skills through sport and PE.
- Although useful, prior sporting experience is not essential.

DO I NEED A GCSE IN THIS SUBJECT?

Desirable

MINIMUM GCSE GRADE SHOULD I AIM FOR TO STUDY THIS SUBJECT?

5

DO I NEED ADDITIONAL GCSES AT A CERTAIN GRADE TO ACCESS?

No

What will I learn?

- The course explores sport and physical activity through a number of different lenses and lends itself to the independent style of learning found in most higher education pathways. Both course options consists of mandatory and optional units. These units will be covered across the two-year course and are usually delivered by subject specialists where available. As part of the Cambridge technical diploma in sport (2 A Level equivalent), we must meet the 'meaningful employer involvement' criteria. This means that pupils will undertake structured experience in a specialist sporting field or be led by an industry professional for an extended period.

What kind of pupil is this course suitable for?

- This course would complement individuals who have a real passion for sport and Physical Education and have interests in the different aspects of sport. Unlike the A level alternative, the Cambridge Technical has some flexibility on the units undertaken. The Cambridge technical is tailored to the cohort and can facilitate pupil interests and aspirations in sport and physical education.



CAMBRIDGE TECHNICAL SPORT & PHYSICAL ACTIVITY

What assessments will I have to take to get my qualification?

The Cambridge Technical varies its assessment methods from unit to unit.

Pupils will sit some externally assessed exams across the two years. The other units will be internally assessed through coursework. Internally assessed content can be done using various modalities, ranging from interviews and presentations to written reports.

What could I go on to do at the end of my course?

The Cambridge Technical extended diploma lends itself to life beyond school. Many pupils go onto further education, many onto sport related courses, but not exclusively. The independent learning style adopted by pupils on the Cam Tech course is highly transferable to higher education. Other avenues for Cam Tech sport pupils include apprenticeships and going into the working world.



1707

YOUR SIXTH FORM

