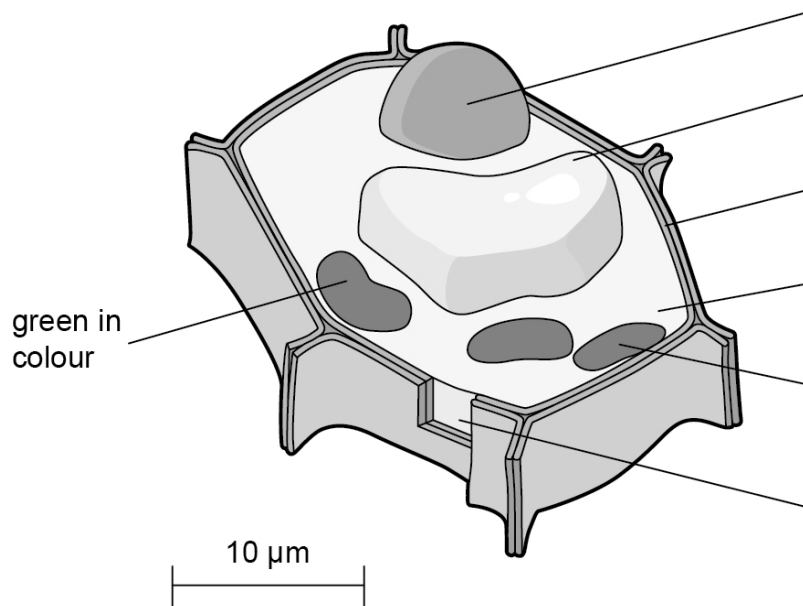


Name _____ Class _____ Date _____

- 1 a Label the names of the sub-cellular parts of this cell.



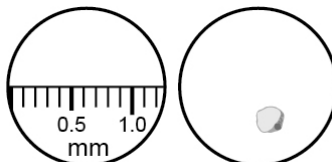
- b Is this cell from a plant or an animal? Explain your choice. _____

- c One part can sometimes be seen using a light microscope but it is not shown here. Draw it in on the diagram and label it with its name.
- d What is the function of the part that you have drawn in? _____

- e What is the function of the largest part inside the cell? _____

- f What other parts do both animal and plant cells have but which cannot be seen using a light microscope? _____
- g The function of these parts is to make a certain substance. What substance do they make? _____

- 2 A special type of glass slide with a very fine scale is viewed through a microscope. The image below on the left shows what is seen. Human fat cells are then observed using the same magnification, shown below on the right.



- a What is the diameter of the **field of view**? _____
- b Estimate the diameter of the fat cell. _____
- c Why is it useful to estimate things in this way, rather than doing careful measurements? _____
- 3 Use the **scale bar** on the drawing of the cell at the top of the page to estimate the length of the green sub-cellular structures. _____